



markem·image

a **DOVER** company



Right on the mark.

Maximizing coding throughput, quality and compliance with SmartLase[®] coding solutions

Redefine the possiblesm • markem-image.com

Did you know?

You can achieve higher throughput with **high quality** and **complex codes**,

30%
faster than competitor lasers



You can be

100%

compliant with industry standards with permanent and consistent printing in conditions up to 45 °C

You can **improve** your line reliability and **coder lifetime** by

30%, with **60,000**
hours MTBF (meantime between failure)



You can achieve **uptime** of

99.9%

in tough conditions with minimal maintenance, no plant air and IP55* as standard

Delivering high-quality laser codes with maximum efficiency



Lasers can be useful in many scenarios. They can code on small areas on inked boxes or across multiple lanes of wide web flexible film where other methods cannot reach, and can help you code effectively on glass or metal.

Laser's high contrast codes – which do not rub off or fade over time – can also ensure lifetime traceability of your products and protect them from being counterfeited.

That said, not all laser coders are created equal. Our SmartLase portfolio delivers better cost efficiency and smoother codes with higher uptime versus other lasers.

Our proprietary technology, such as our patented scribing system - **Intelli'Arc®** - paired with **Intelli'Cool®**, delivers faster codes with greater reliability and throughput at higher duty cycles – even in hot, humid and dusty environments.

This also holds true when marking products with increasingly complex codes like those being demanded in industries such as food, beverage, and pharmaceutical where traceability is essential and code lengths are soon expected to double.

Our range is supported by our deep familiarity with diverse applications and our ongoing innovation ensures our solutions remain best-in-class. Decades of experience mean we have strong insight on what is needed to deliver the most effective marking solutions tailored for your plant with hassle-free integration.

And, if you are concerned with sustainability, SmartLase products minimize waste and chemicals handling, reduce odors and cut carbon footprints. Good for your company, your employees and the environment.



High performance

99.9% line availability and 30% longer coder life even in challenging environments



Wide portfolio of lasers and configurations

Versatile range of equipment and accessories to match your line speed, package size and material



User-friendly experience

Intuitive touch screen interface to minimize operator training and human errors



Efficient coding execution

Simplified data management and enterprise integration via CoLOS® software



Sustainable

No harmful chemicals, no consumables, no odors and no plant air



Unparalleled global support

Quick, consistent service wherever you need it, including specific service exchange modules

*IP Ingress Protection rating regarding dust and liquid

We understand your challenges can be different according to your role on the production line



1 | Production manager

Your challenges

- Attain high line productivity even at temperatures of 45°C / 113°F
- Minimize code and changeover adjustment time
- Assure operator safety

Our solution

- Patented scribing technology - **Intelli'Arc** - codes 30% faster* than vector lasers in part due to our unique **Intelli'Cool** systems which prevent overheating at high duty cycles and minimize downtime
- Aiming diode (standard) and CoLOS® software expedite changeovers and code adjustments
- Compliant to ISO 13849 (PLd) ensuring safety

Your benefits

- Greater peace of mind, more codes per minute even in extreme conditions, saving up to 150 hours per year with faster changeovers

2 | Quality manager

Your challenges

- Avoid damage to the packaging material
- Prevent missing or unreadable codes while meeting regulatory compliance requirements
- Ensure code integrity (right code, right product)

Our solution

- Consistent energy delivery with proprietary scribing patterns ensure laser does not dwell too long in one place to pierce or perforate material
- **Intelli'Cool** and **Intelli'Arc** provide high quality shapes and perfect codes
- User interface delivers data security via locked fields, protected profiles and parent/child mode. Extra control via CoLOS Data Management

Your benefits

- 100% code compliance
- No package damage, product claims, recalls or scrap due to incorrect or non-compliant codes

3 | Maintenance manager

Your challenges

- Maintain performance with minimum effort
- Keep maintenance costs low
- Diagnose issues easily and minimize downtime

Our solution

- Simple basic maintenance: tool-free, quick disconnect capabilities and modular design to enable straightforward part exchange and easy lens cleaning
- Range of service level agreements including advanced service exchange option of 24-48 hour service, configurable beam orientation solution
- Smart interface with warning messages and log files to guide maintenance

Your benefits

- Minimal corrective maintenance or downtime over 7 years, 99.9% line efficiency and 60,000 hours† MTBF

4 | Purchasing manager

Your challenges

- Achieve optimal return on investment (ROI) and low total cost of ownership (TCO)
- Maximize resources while minimizing capital and operating expenditures
- Ensure equipment can adapt easily to future needs

Our solution

- Lower running costs due to less energy used, no plant air or consumable costs, long-life extraction filters and extended maintenance intervals as well as a proven MTBF of 60,000 hours† and a 30%* longer life versus other options
- SMILE finance solutions and TCO guide
- Simple firmware upgrades to ensure laser remains effective as production requirements change

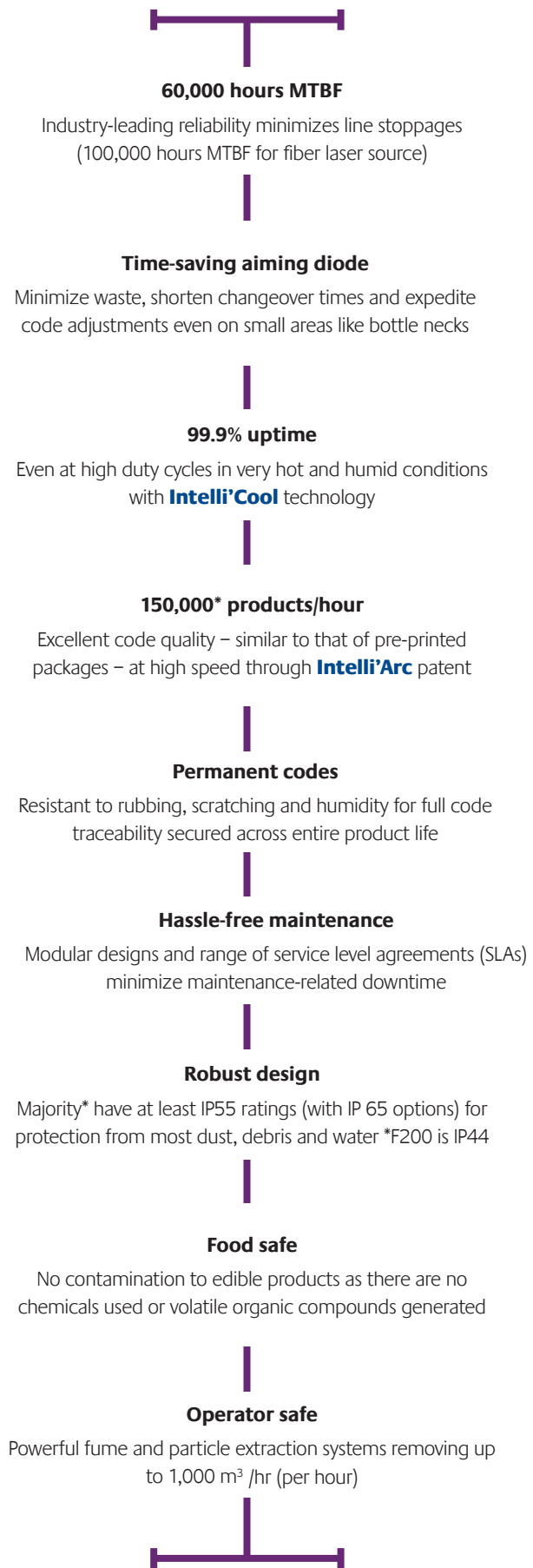
Your benefits

- Optimized ROI and TCO, today and tomorrow

* SmartLase C Series. SmartLase F lasers provide ultra-fast coding and ultra-smooth characters via unique algorithms

† 100,000 hours for fiber laser source

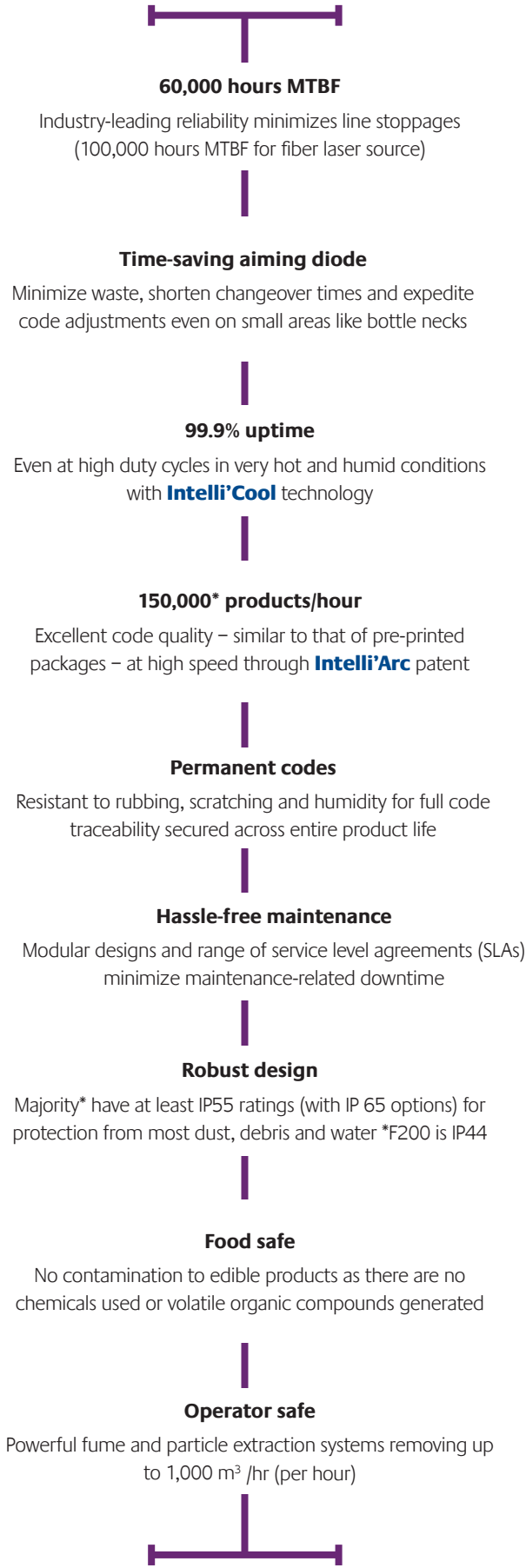
Best-in-class laser performance as standard across the range, with solutions for many applications: Food, confectionery, dairy, beverage, cosmetics, toiletries and industrial



Inked boxes, glass, paper labels & films	PET bottles & sleeves	Flexible packaging & glossy laminated boxes	Wide web flexible stick pack film & foils	Pouches & labels
SmartLase C150 & C350 	SmartLase C150S & C350S 	SmartLase C350L 	SmartLase C350 HD, LHD SHD, HD+, LHD+ 	SmartLase C350 BOU, LBOU, SBOU
For intermittent and continuous lines, the SmartLase C350 30-watt CO ₂ laser coder addresses diverse medium and high speed applications requiring complex codes. For low speeds the SmartLase C150 10-watt version is the lower cost solution.	The SmartLase C350S 30-watt CO ₂ laser coder is designed for high speed PET beverage production and provides crisp codes even in wet environments. SmartLase C150S is the 10-watt CO ₂ option for medium speed lines.	The SmartLase C350L laser coder is engineered to meet the needs of medium and high speed food and confectionery flow wrap and pouch applications.	The SmartLase 30-watt HD (High Definition) family of laser coders produces coding on stick pack (including triplex), pouches and wide web films in static, multi-lane medium speed food and dairy applications up to 1,000 millimeter (mm) wide.	The SmartLase C350 BOU 30-watt laser coder family offers a flexible beam delivery solution for medium to high speed food and beverage applications along with easy integration into complex packaging machine areas.
Key benefits <ul style="list-style-type: none">Flexibility to code in various packaging positions and orientations Key features <ul style="list-style-type: none">Wavelength of 10.6 µm providing the flexibility to code a wide range of surfacesPrint at speeds up to 2,100* characters/s (per second)	Key benefits <ul style="list-style-type: none">No risk of perforation even on light-weight PET bottlesQualified for integration into the fastest filling and blower machines (Krones, KHS, Sidel Super Combi)Replaces 50 to 60-watt lasers reducing energy costs Key features <ul style="list-style-type: none">Optimal wavelength of 9.3 µm for PET bottles and sleevesProtocol specifically optimized for high-speed bottling lines, e.g. Krones Checkmat, to enable advanced traceability requirements for such lines	Key benefits <ul style="list-style-type: none">Sharp and perfect character shape without damaging laminate top layerNo risk of perforation on flexible films thanks to advanced and unique laser settings (non-crossing and dot matrix fonts)Coding and scoring for easy open pouch applicationsSmall characters (down to 1.5 mm) that are easy to read in multiple line codes on narrow spaces Key features <ul style="list-style-type: none">Optimal wavelength of 10.2 µm for films and laminate boxes	Key benefits <ul style="list-style-type: none">Print more HD codes with fewer lasers on large areasSingle point of control via CoLOS or dedicated controller for multiple head configurationsPlace code anywhere, in any orientationLast minute customization possible (flavor, weight, promotion, etc.) helping to reduce foil inventoryQualified on packaging machines - form/fill/seal (Synerlink Arcil, Ermi, Erca), stick pack (Mespack, Toyo) Key features <ul style="list-style-type: none">Optimal wavelength of 9.3, 10.2 and 10.6 µm for any common packaging material such as metalized and triplex filmsAdvanced extraction kit for very dusty applications	Key benefits <ul style="list-style-type: none">No risk of piercing even on light-weight PET bottlesIntegrates into standard labelers: Krones, Sidel, KHS Key features <ul style="list-style-type: none">Optimal wavelength of 9.3 µm for PET bottles, 10.2 µm for plastic labels and 10.6 µm for paper labelsCode up to 45,000 bottle labels/hr on the fly or up to 130,000 pre-labeled bottles/hrLarge choice of BOU (Beam Orientation Unit) tube lengths<ul style="list-style-type: none">- BOU anchor tube: 342 and 142 mm- Extension tube: 190 and 80 mmSpecific Krones S BOU to fit into latest Krones Checkmat generation

* Figures dependent on packaging material and code content

Best-in-class laser performance as standard across the range, with solutions for many applications



Film, rigid plastics & metals

SmartLase Fiber F200 & F500

The SmartLase F500 50-watt fiber laser coder provides permanent codes at high speed on cans, plastics and polymers, flexible film and bare metals in beverage and other high throughput applications. The 20-watt F200 codes similar surfaces on medium speed lines.

Key benefits

- High contrast coding on white and black plastics
- Avoids need for 70 or 100W fiber lasers, saving energy costs
- Intuitive handheld touch screen user interface for quick job editing and changeovers

Key features

- Optimal wavelength of 1.06 μ m for rigid plastics and metals
- Print up to 2,400* characters/s with the F500 and 1,000* characters/s with the F200
- Variety of fonts, 1D and 2D barcodes and graphics for most applications and languages
- Wide choice of lenses for various applications

Laser samples

<p>SmartLase C350S PET Bottles - Beverage</p>	<p>SmartLase C350HD Film – Multi-lane Dairy Application</p>	<p>SmartLase F500 Metal Cans - Beverage</p>
<p>SmartLase C350 Inked Boxes or Paper Cartons - Cosmetic & Pharmaceutical</p>	<p>SmartLase F200 Plastics - Polypropylene Containers - Dairy</p>	<p>SmartLase C350BOU Paper Labels or Glass - Beverage</p>
<p>SmartLase C350L Films or Paper Cartons - Confectionery</p>	<p>SmartLase C350HD+ Triplex film - Coffee Stick Pack Application</p>	<p>SmartLase C350 Inked Boxes or Paper Cartons - Frozen Food</p>

Accessories

Laser fume extraction units

Markem-Imaje fume extractors eliminate a variety of fumes and particles generated when different materials are laser marked.

Key benefits

- Reduce or eliminate any health issues linked to inhalation of sub-micron particles or gases.
- Prevent contamination of products.
- Maintain high quality codes, extend laser life and limit downtime by eliminating particles that could affect or damage the laser optical system.

Guarding

Guarding tunnels are intended to achieve operator safety by blocking harmful laser radiation, direct or reflected.

Opaque elements of guarding are made of steel or aluminum with a dull / brushed non-reflective finish. Transparent elements of guarding are made of polycarbonate, at least 3 mm thick, for CO₂ lasers and Poly(methyl methacrylate) (PMMA), at least 2 mm thick, for fiber lasers.

Key benefits

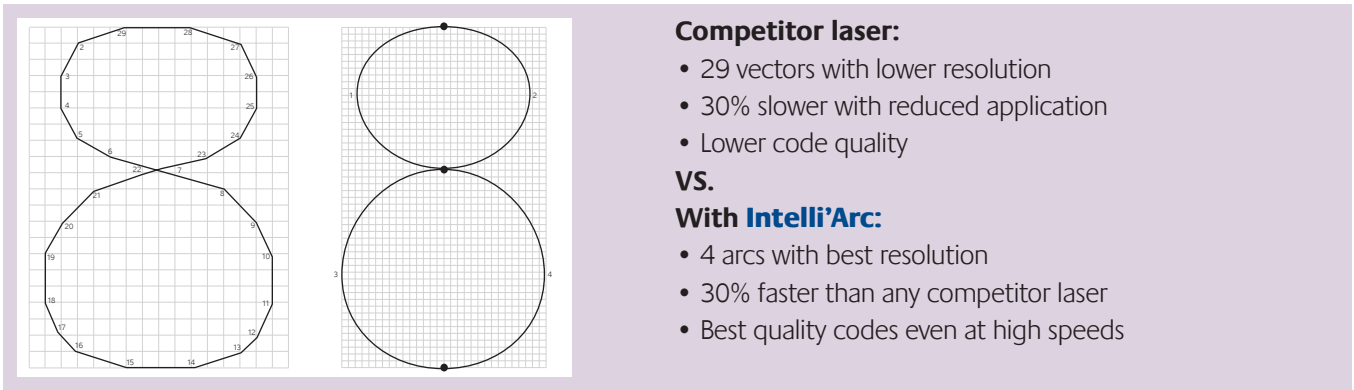
- Operator safety within a Class IV laser environment.
- Easy integration: Eight standard sizes available for CO₂ laser guarding and custom guarding for fiber laser.

* Figures dependent on packaging material and code content

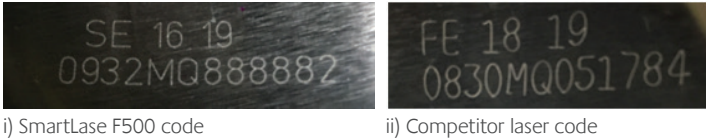
Top code quality and reliability with SmartLase coding technology

Proprietary technology for the best codes

The patented scribing technology - **Intelli’Arc** - in the SmartLase C Series provides the smoothest, most crisp quality codes which can be scribed 30% faster than competitor lasers.



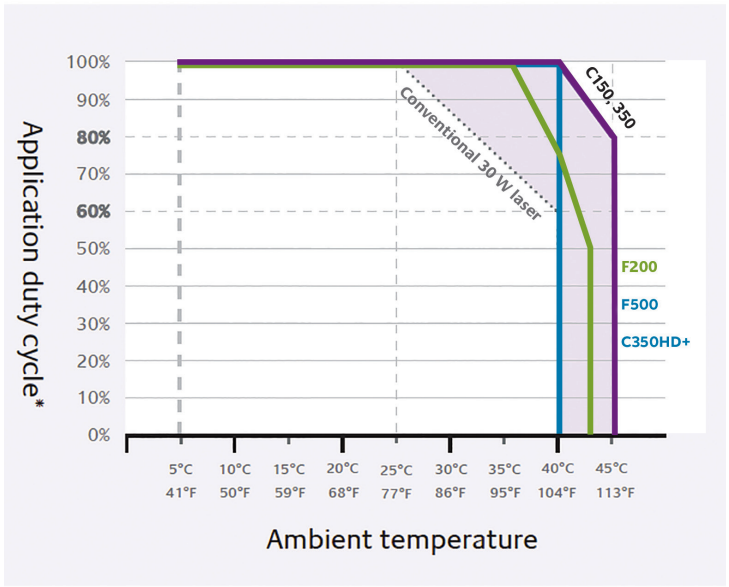
SmartLase Fiber Series lasers also provide more precise, faster coding than competitor lasers – this time through the use of unique algorithms.



Exclusive cooling systems for high reliability

Intelli’Cool technology within SmartLase lasers enable them to operate effectively across a wide ambient temperature range of 5°C to 45°C, even at high application duty cycles and without any adverse effect on quality and no downtime.

- In the SmartLase C Series, this is achieved via a proprietary cooling system which features two central fans and heat dissipaters at the front and rear, providing balanced cooling for the laser source located within the printhead.
- In the SmartLase F Series, proprietary computer-aided fluid dynamics modeling ensures the air flow inside the F500 controller and source cabinet supported by the ES500i+ (extractor and cooler) provides the coolest operating conditions for the laser source and electronics. In the F200 fans and manifolds direct the air in ways which minimize the impact of heat on the internal components.



By contrast, many competitor laser coders can only operate effectively at up to 40°C with application duty cycles limited to a maximum of 60% as they only have a single fan at the end of the laser and insufficient scanhead cooling. Indeed, Markem-Imaje’s advanced **Intelli’Cool** systems mean manufacturers can replace less efficient, cumbersome higher wattage laser coders which require mandatory water cooling above 35°C.

Also, the faster scribing patterns versus competitor lasers let SmartLase units cool for longer since there is less marking time, improving laser source lifetime.

* A duty rate cycle is the percentage of one period in which the laser is active. It is expressed as $D = T/P$ (T is the time the laser is active and P is the total period).

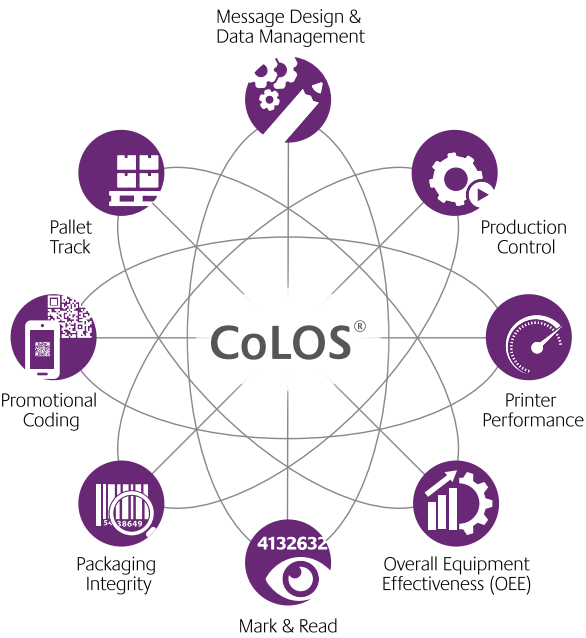
Drive efficient laser coding with CoLOS[®] information management system

Enhanced integration capabilities

In an era where margins are tight and traceability is ever more important as recall scandals can quickly go global, you need accuracy and efficiency in your printing and coding.

CoLOS minimizes risk of errors, ensures 100% compliance with regulations and can help reduce overall packaging running costs by up to 15%.

The automation it provides cuts manual data entry and message data maintenance by 90%, while halving changeover time between product runs, saving hundreds of hours of downtime per year. Recalls are also easier managed.



SmartLase for OEMs

The SmartLase C Series features web user interface capability, 0/90° or BOU or HD laser head configuration, pointing diode for easy integration into packaging machines and is compliant with ISO 13849 (PLd) and Pack ML. Compatible with industry standards like Weihenstephan (Krones, KHS), PackML (Sidel) and Codentify protocols.

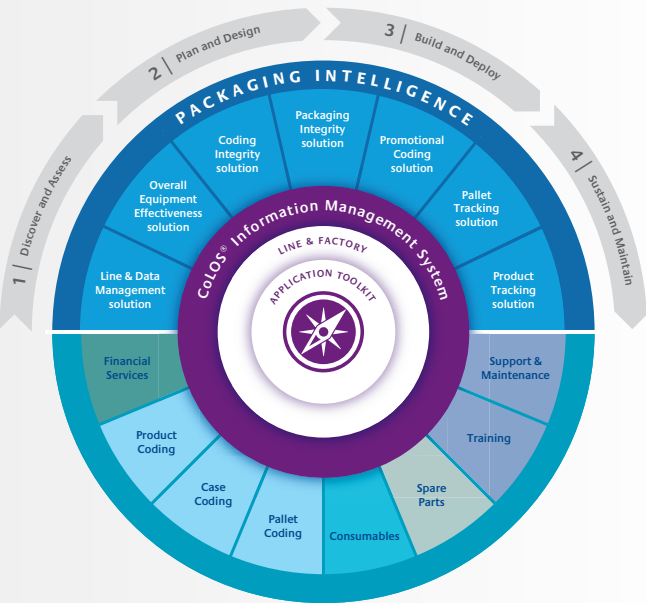
Consulting & Integration Services Delivering the right solution, each time, every time

While you can operate all your printers with our CoLOS system yourself and use many applications straight out of the box, we can offer you so much more – our experience in solution implementation.

Our industry-leading Consulting & Integration Services team can handle all aspects of solution implementation from initial needs discovery, through implementation, to in-service support. For applications beyond our standard hardware and software, we have experts who are fully trained in using toolkits to add further functionality to achieve the most advanced solutions.

Additionally, our standard project methodology allows us to achieve rapid, predictable, repeatable and successful solution implementations.

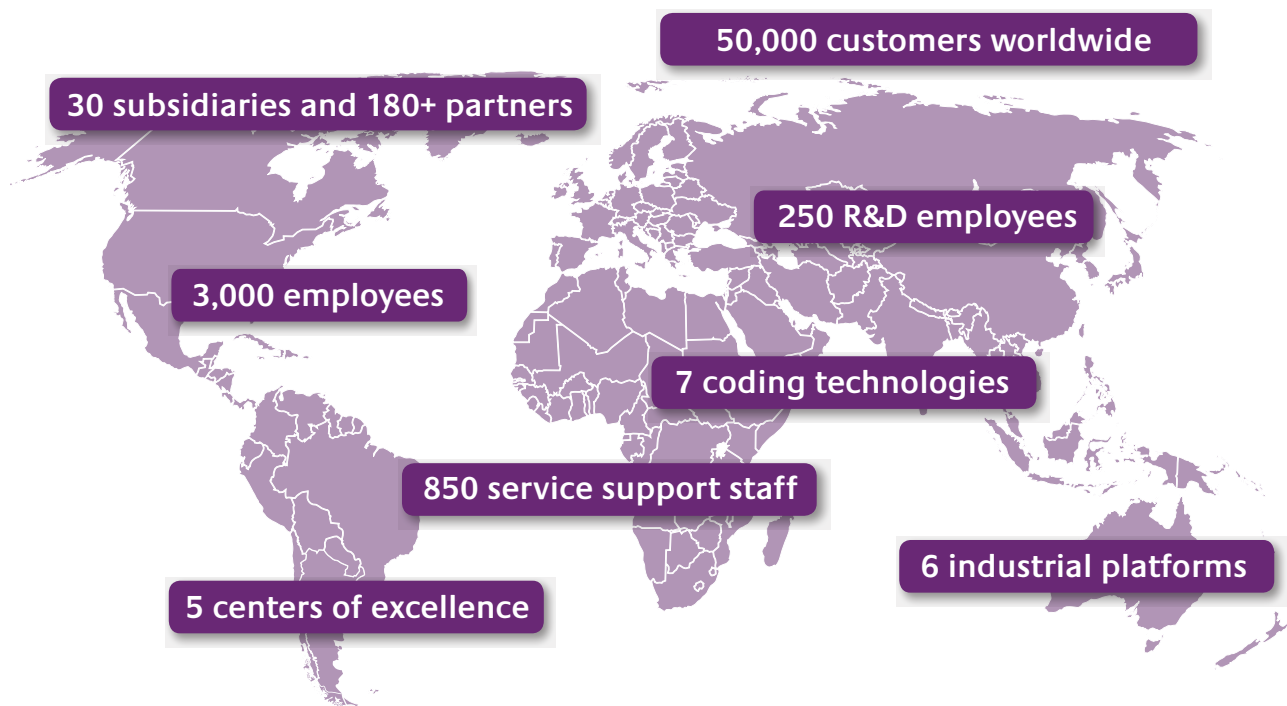
This can be done for single production facilities or easily rolled out across multiple global sites. Our solutions team can ensure you can design once and deploy many times.



About Markem-Imaje

Markem-Imaje is a wholly owned subsidiary of the US based Dover Corporation and a trusted world manufacturer of product identification and traceability solutions. We offer a range of market-leading inkjet, thermal transfer, laser and print and apply systems along with the software and consumable solutions to go with them so you can streamline all your printing needs from one supplier. We provide a global reach to over 50,000 customers worldwide.

With decades of technical experience in hardware and software implementation and the most extensive global network coverage in the industry we can meet your needs, however big or small. Plus, with our extensive and ongoing research, development and testing activities you can be assured of using a world-class solution that is at the forefront of technology.



We reserve the right to amend the design and/or specifications of our products without notice.
©2019 Markem-Imaje Corporation. All rights reserved

Markem-Imaje
Global Sales & Marketing Division
9, rue Gaspard Monge - B.P. 110
26501 Bourg-lès-Valence Cedex - France
Tel +33 (0) 4 75 75 55 00
Fax +33 (0) 4 75 82 98 10



Redefine the possible™